

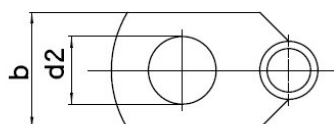
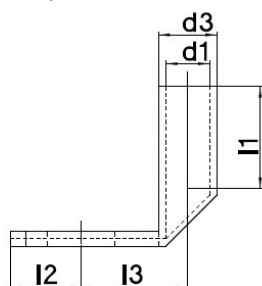
Product data sheet

Angled tubular cable lug 90°

Item number: WR-185-20-90



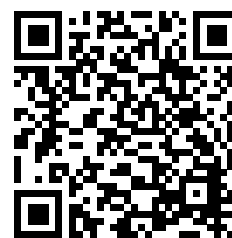
Illustrations may be similar



| | |
|---------------------|-------------------------|
| Material: | Cu-ETP electroplated Sn |
| Standard material: | DIN EN 13600 |
| Cross-section mm²: | 185 |
| Connection bolt M: | M20 |
| (d.1) mm: | 19,0 |
| (d.2) mm: | 21,0 |
| (d.3) mm: | 24,0 |
| (b.) mm: | 39,0 |
| (l.1) mm: | 32,0 |
| (l.2) mm: | 22,0 |
| (l.3) mm: | 24,0 |
| Heat resistant: | up to +125°C |
| RoHS compliant: | Yes |
| Weight kg/100 pcs.: | 12,050 |
| Packaging unit: | 50 |

For individual advice, please feel free to contact us by email:

Subject to changes and errors.



Product link